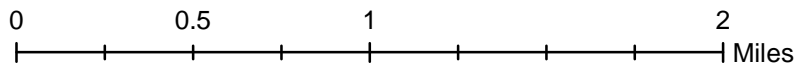
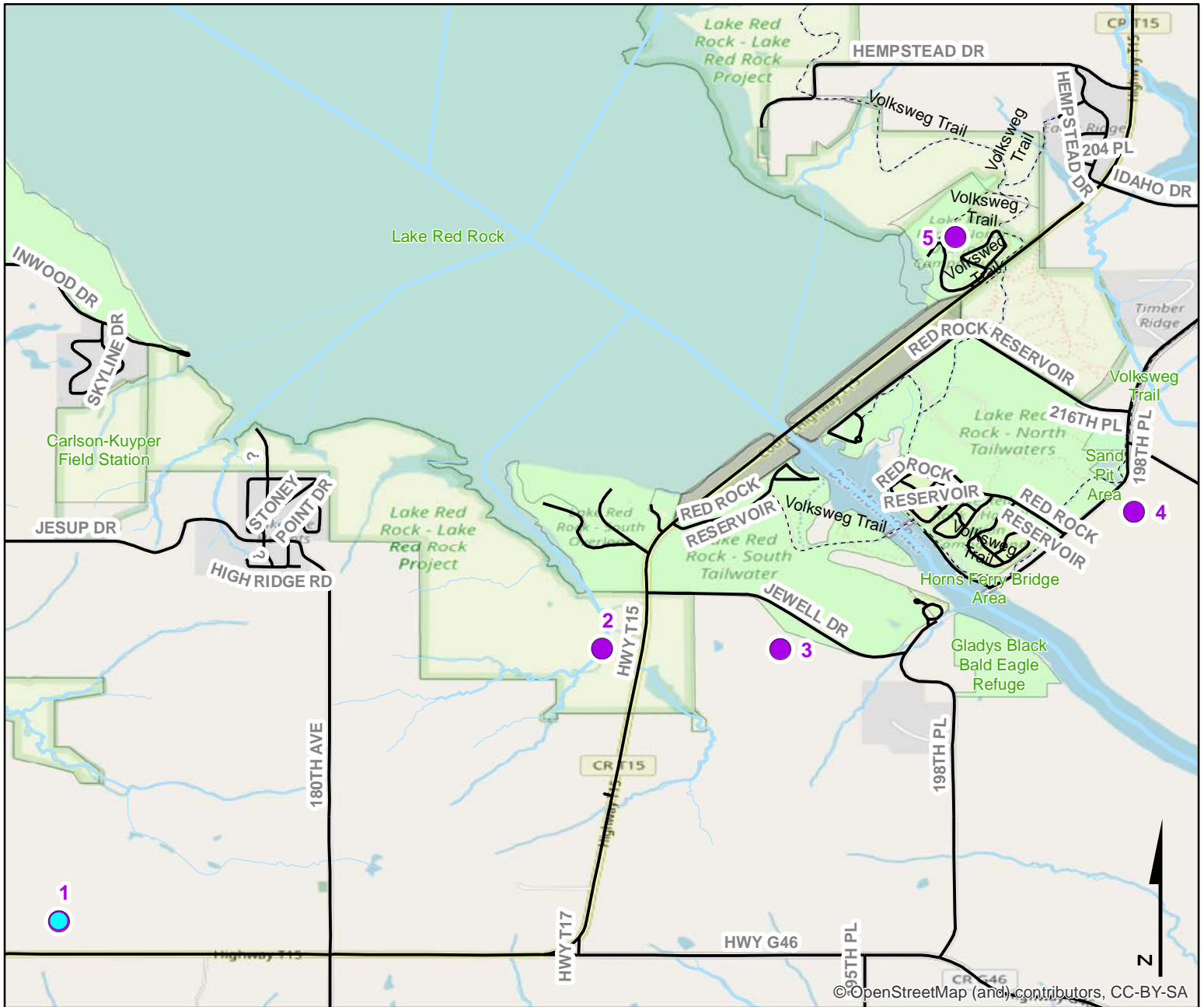


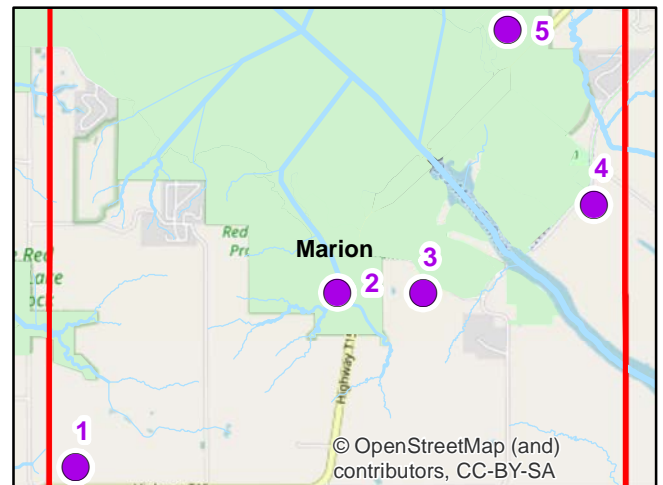


Volunteer Wildlife Monitoring Program (VWMP) Frog and Toad Survey

Route ID: 201 County: Marion



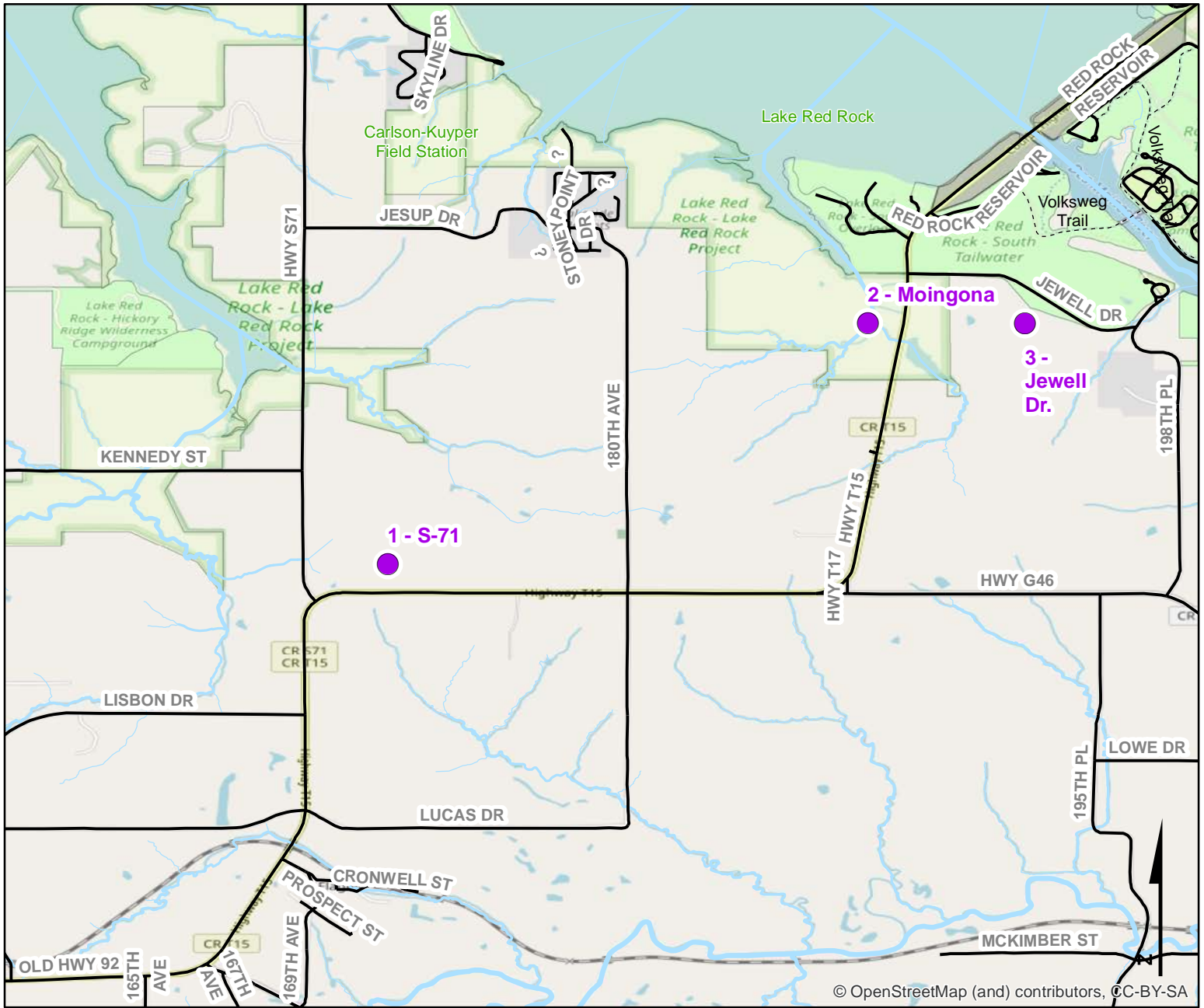
Legend



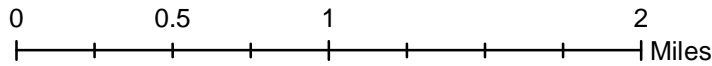


Volunteer Wildlife Monitoring Program (VWMP) Frog and Toad Survey

Route ID: 201 County: Marion

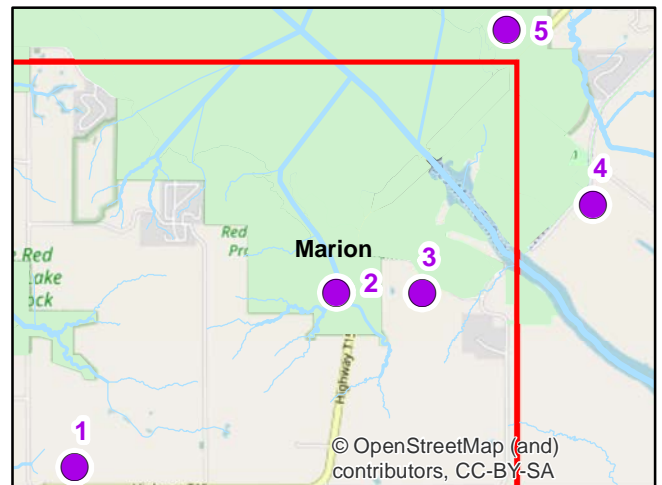


© OpenStreetMap (and) contributors, CC-BY-SA



DNR
 Volunteer
 Wildlife
 Monitoring
 Program

Legend

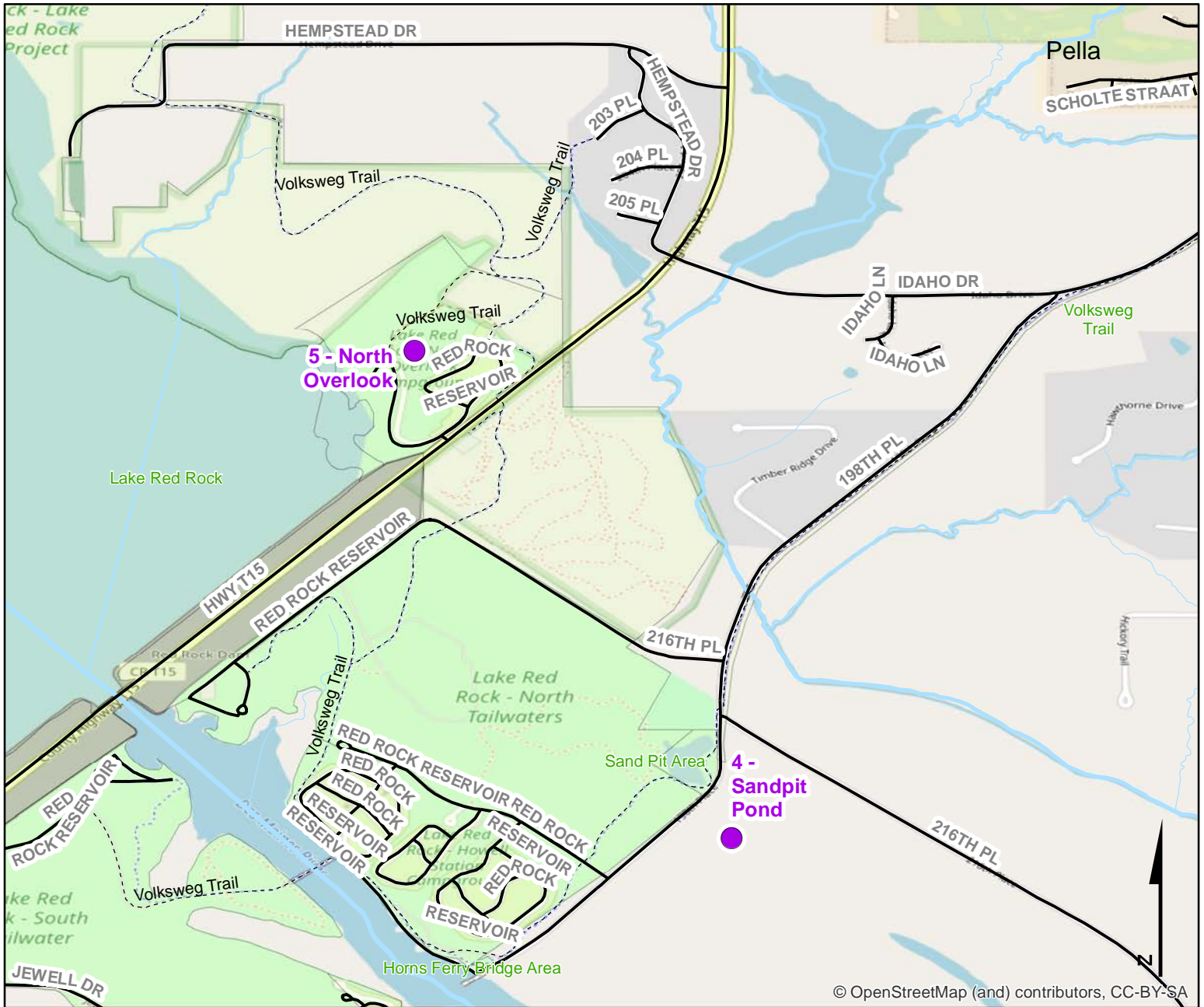


© OpenStreetMap (and) contributors, CC-BY-SA

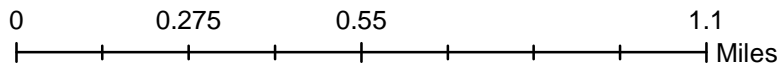
Volunteer Wildlife Monitoring Program (VWMP) Frog and Toad Survey



Route ID: 201 County: Marion

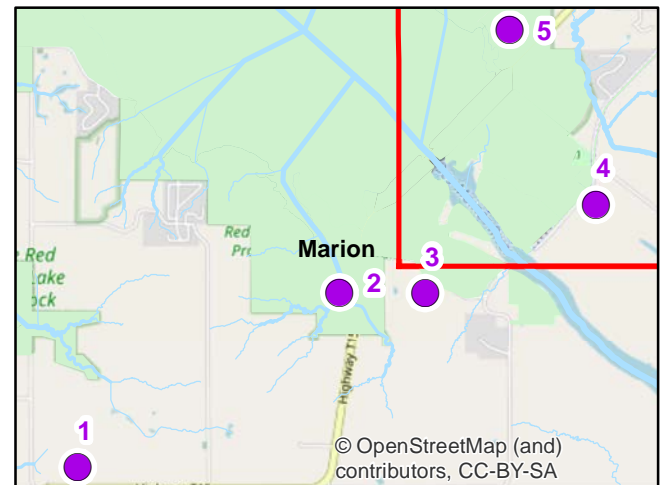


© OpenStreetMap (and) contributors, CC-BY-SA



DNR
Volunteer Wildlife Monitoring Program

Legend



© OpenStreetMap (and) contributors, CC-BY-SA



Frog and Toad Call Survey Route Description

Route ID **201**

Established: 2002

Site Number	Name	County	Latitude	Longitude	Directions
1	S-71	Marion	41.3439492	-93.0190527	Along east road shoulder, along the south side of Hwy S71 near intersection with Hwy T15
2	Moingona	Marion	41.3583176	-92.9904357	
3	Jewell Dr.	Marion	41.3582804	-92.9810627	North road shoulder along Jewell Dr, approx. 1 mile east of intersection with Hwy T15. Eastern most pond - 3 ponds in close proximity.
4	Sandpit Pond	Marion	41.365536	-92.9624201	Small parking lot east of pond on 198th Place, approx. 1/2-3/4 mile south of intersection with Idaho Dr
5	North Overlook	Marion	41.379987	-92.9718238	Sewage Lagoon, service road accessible from North Overlook Beach on north side of Red Rock Dam